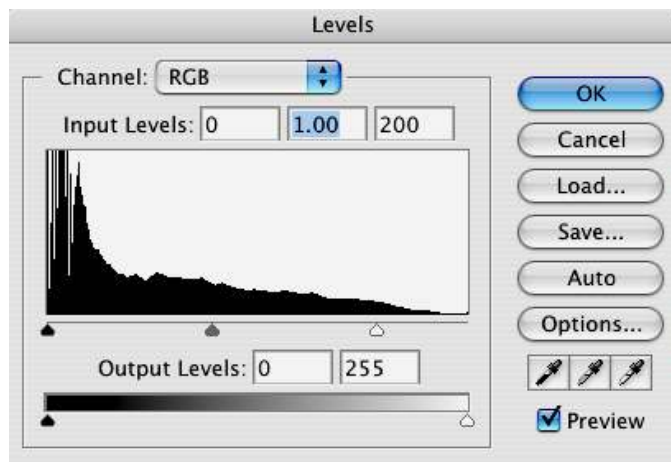


# FUN WITH THE HISTORY BRUSH

The history brush is one of my favorite tools. It can be used to modify portions of the image without making a selection. Once you see how easy it is to use, you will love this tool. Make sure your history palette is open. If not choose Window / History.

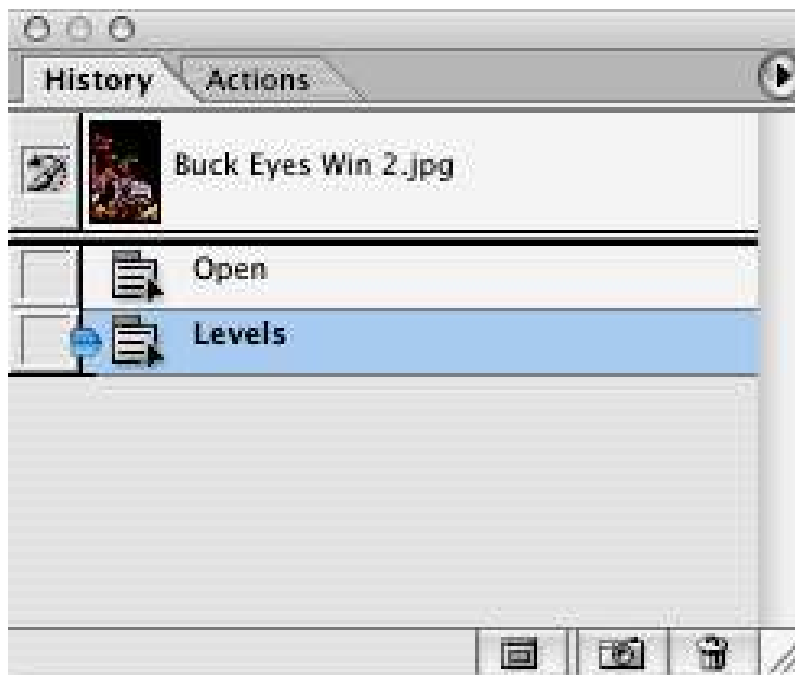


Let's use the history brush to adjust the cheerleaders face so it has a little more punch. First open up Level (image/adjustments/Levels) and adjust the sliders while only looking at the girls face. Don't worry if other parts of the image don't look good.



Click OK.

The history palette will look like this:



These are called history states. Here we have an “Open” history state and a “Levels” history state. Click back on the Open history state to undo the Levels move.



At this stage you are back where you started. Click a little history brush in the box just left of the Levels state. Make sure not to highlight the Levels state. At this stage the history palette is ready to paint in the Levels adjustment.

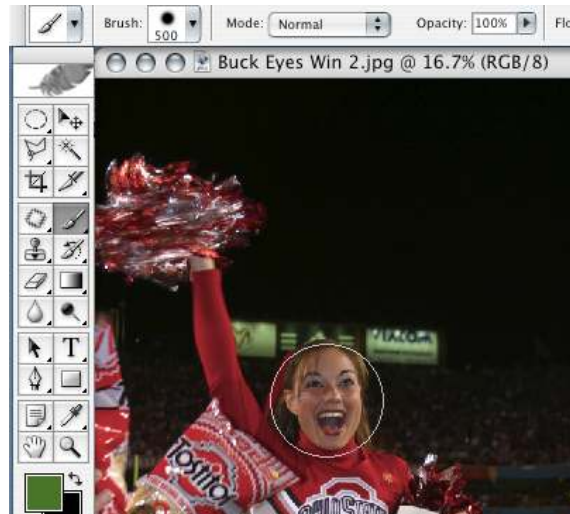


Now choose the history brush on the toolbar.



Be sure and set the hardness of the brush in the middle. Hold the shift key down and tap on the left bracket key four times and then the right bracket key twice.

Move the mouse to the girls face and use the bracket keys to get the right size brush for the girls face. Make sure the history brush options are set to normal and the opacity on 100%.



Now use the history brush and paint the Levels adjustment on the girls face. So here's what we did:

Opened an image

Made a Levels adjustment for the girls face

Clicked back one history state to undo the move

Set the history brush to remember the Levels adjustment

Painted in the adjustment on cheerleaders face.



Now use the history brush to darken the newspaper in the image. Start by making a Levels adjustment that is just concerned with the newspaper and click OK. Then undo the Levels move, by clicking one history state above in the history palette. Finally click the little history brush just to the left of the Levels state that was made for the newspaper.

The history brush can paint in just about any move of Photoshop. With some practice you will love this tool. You can paint in motion. You can paint a background out of focus. Just about anything can be painted back with the history brush.

The history palette can also save snapshots of the current image on the screen. These snapshots are different than a history state as they sit on the top of the history palette. These snapshots can also be used with the History brush. Here's how they work:

Here's a great way to get that old hand painted look with the History brush.

Open an image and then choose:  
Image / adjustments / Hue & Saturation



Check the Colorize box and then set the hue to 30 and the Saturation to 15. Fine tune the brown with these two sliders.



Click on the little camera icon at the bottom of the history palette to save a snapshot of the sepia tone history state. A snapshot sits at the top of the history palette while the image is open in Photoshop. Now look at the top of the history palette. The little history brush is already set next to the color image snapshot. It's all ready to paint some color in the image. Choose the history brush on the toolbar and paint in the areas you want to have color.



If you want to undo what you have painted in, just click the little History Brush icon next to the brown toned snapshot.



History states do not save with the image. Once the image is closed and reopened, all the history is gone.