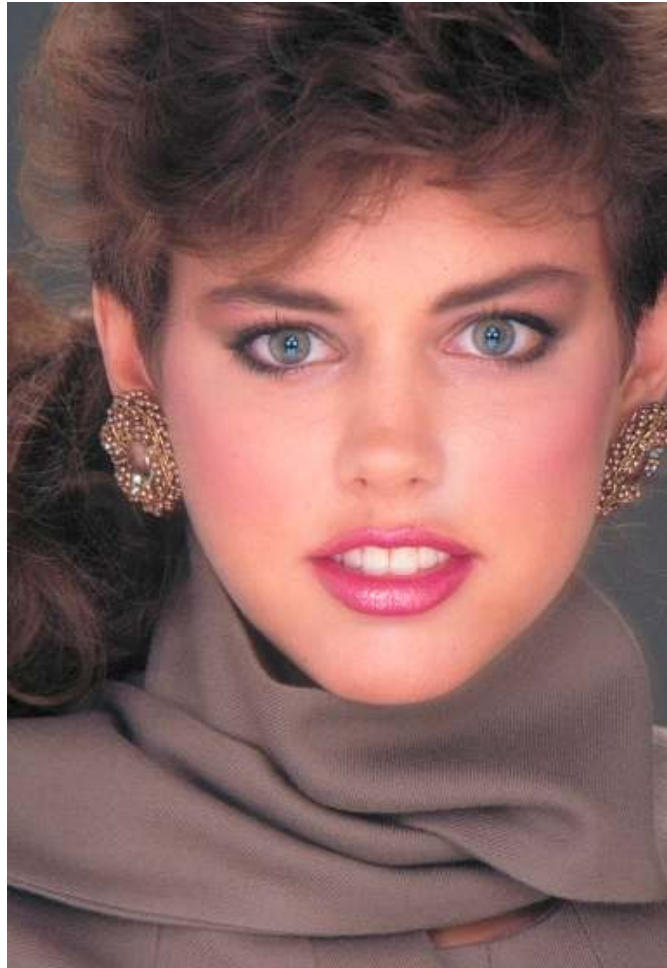


Put those RGB Color Spaces to Work

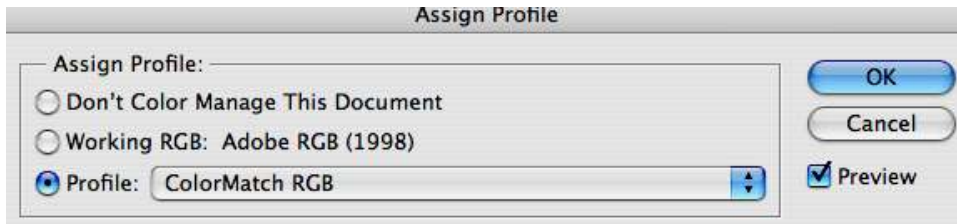
I like to think of RGB color spaces like film. When I was working with film, I would choose my film based on the type of image I was shooting. Portraits shots required a lower contrast film. For landscapes I would choose a film with more contrast and saturation. RGB color spaces are similar. My general RGB color space is Adobe 1998. This lesson will show how to “Assign” a different color space.

Open the image called “Lisa”



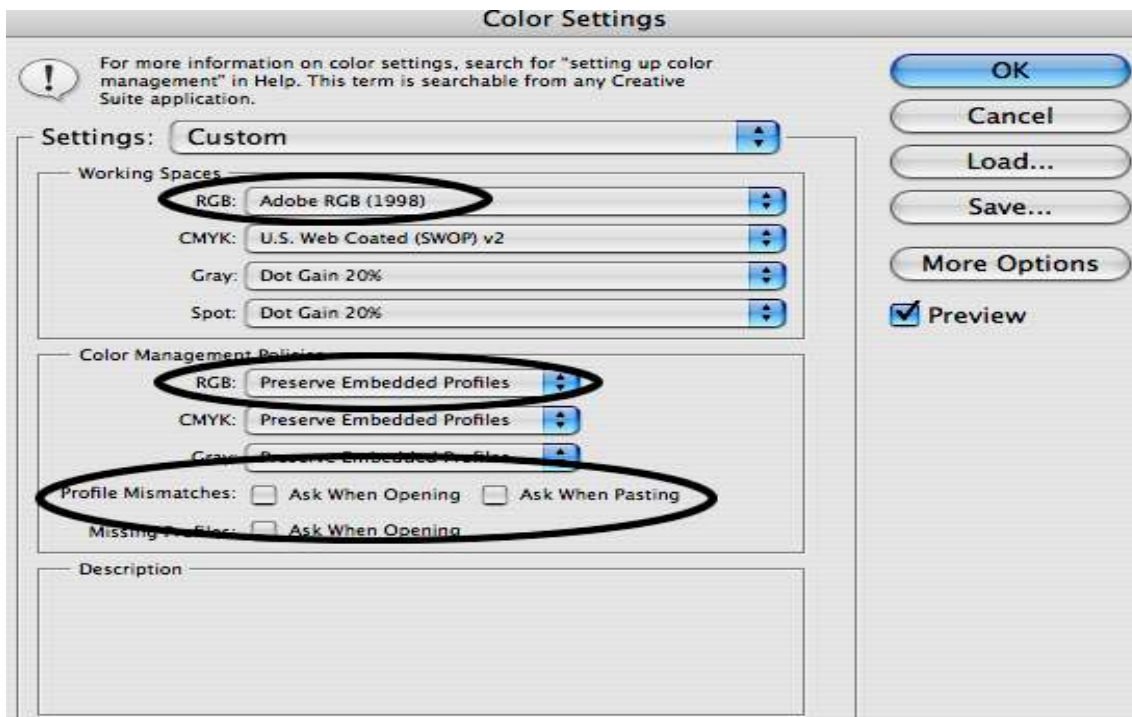
My default Color space is Adobe 1998. In portraiture there are times when Adobe 1998 is not the best color space. This image of Lisa is a good example. The skin tones are too saturated and red.

The trick is to assign a different RGB color space, choose: Edit / Assign Profile.



I like ColorMatch and sRGB. Both of these RGB color spaces have a much lower contrast, similar to my favorite portrait films of old. Don't worry too much if the image looks a little lighter on the screen. The image will need to be adjusted with Levels or Curves after you assign the new Color space.

You will need to change the Color Management policies in Photoshop's Color Settings box. Choose: Edit / Color Settings.



Keep the RGB color space set to Adobe 1998, but change the Color Management policies to Preserve Embedded Profiles. Leave the "Profile

Mismatches” boxes unchecked. With the Color Management policies set this way, each image will open up in the assigned color space.

I use Adobe 1998 for the bulk of my work, but many times I will open an image and then Assign either Colormatch or sRGB to see if it gives me a better starting point for my image.